

613F RESIN

NEW

Fast-hardening embedding resin, low viscosity and CMR-free*.

Embedding is a step in metallographic sample preparation which enables pre-polishing and polishing of pieces in a more ergonomic way. In some cases, impregnation may be necessary to preserve the integrity of the sample.

Description

Resin 613F is a fast-hardening hard bi-component epoxy resin used for high quality embedding at room temperature.

Resin 613F is low shrinkage, adheres perfectly to all types of material and has very good chemical resistance.

With an ideally suitable viscosity, resin 613F is used to embed metallographic samples which have complex shapes, are porous or for delicate coating techniques.

It must be used on materials which can tolerate temperatures up to 140°C. It is recommended to obtain fast, hard, transparent embedding.

Features

Fast polymerization.

Can be used in impregnation with the M.M.818 vacuum embedding machine.

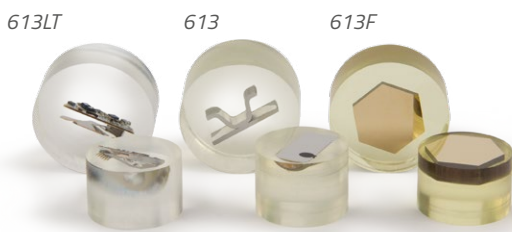
Bubble removal and shrinkage can also be improved using the M.M.808 pressure embedding machine.

Does not contain CMR.

Easy to use, 2 components.



Mounted samples after polishing



Also available in standard version 613 and hardening without temperature increase 613LT.

Technical data	613F RESIN
Material	Epoxy
Pack format	Kit containing 1000 ml liquid resin + Hardener 500 ml - Code KITO600613F00 Liquid resin 1000 ml - Code 06 02613F00 Hardener 500 ml - Code 06 01613F00
Dosage	2 parts resin to 1 part hardener
Appearance	Transparent with a slight amber tone
Polymerization time	2-3 h at 20°C
Hardness	85 Shore D
Exothermic temperature	140°C**
Volumetric shrinkage	Very low, 0 µm if used with the M.M.808 machine
Presence of CMR*	None
Suitable for impregnation	Yes



Safety data sheets

* CMR: Carcinogenic, Mutagenic, Reprotoxic.

** Exothermic temperature during polymerization for a 40g resin sample at 20°C.